

Winter Navigation Service (WNS)

1. Winter Navigation Service provides ships ice routes and detailed information regarding icebreaker assistance in the northern Baltic Sea. Information will be provided from ice-coordination centers and directly from icebreakers.
2. In ice-covered areas, the coordinating icebreaker provides waypoints, which indicate the recommended route. The waypoints are set in order to help vessels navigate more easily and safely in ice conditions and in order to enable ships to navigate unassisted for as long as possible. Ships are, however, at all times responsible for their own safe navigation.
3. General ice waypoints for all ships will be available for all vessels for route planning. When ships are entering the ice covered waters, Shore Centers will send the up-to-date waypoints directly to the ship.
4. Icebreaking authorities recommend that all ships that are bound for ports in ice-covered water send their voyage plan (Preferably, it should contain a schedule) to the service. Information will be used for monitoring of the ships voyage in ice conditions and for planning of icebreaker assistance.
5. When needed, icebreakers will send detailed recommended ice routes to ships. These recommendations can be either short alternative segments for the planned route or the modifications in the ships original route. After receiving the information, ships navigational personnel can update the current voyage plan and send it to all interested parties.
6. In addition, icebreakers and coordination centers can send further information using text messages. This can include information such as; the position, name and VHF working channel of the icebreaker, recommended time of arrival to icebreaker meeting point, assistance order or other navigational instructions.

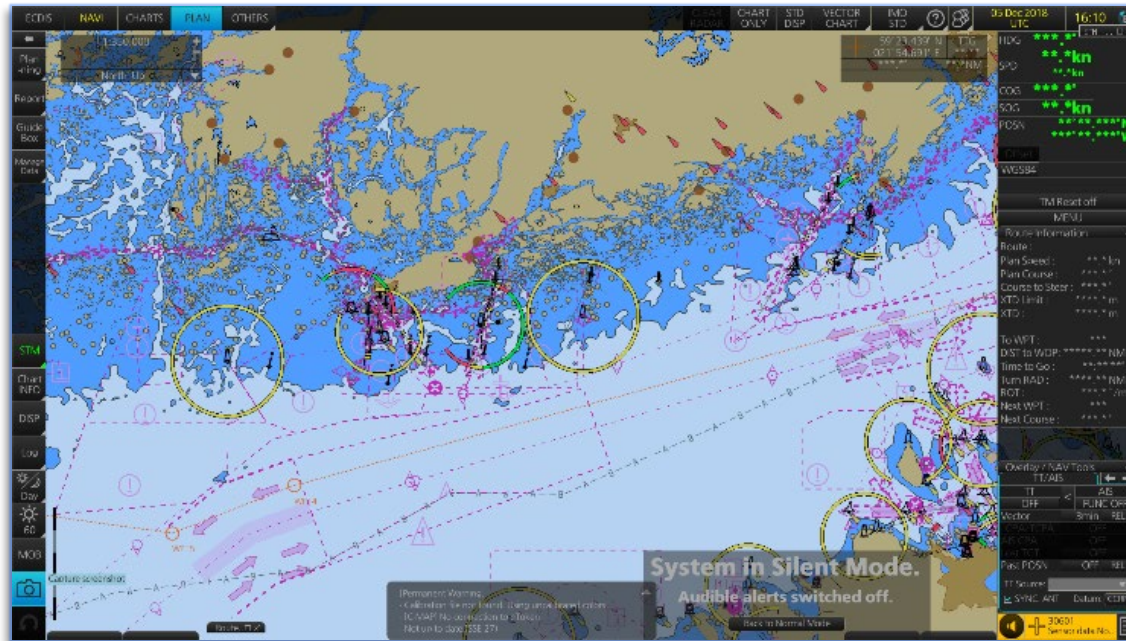
WNS Example

Ship voyage: Baltic Sea-Oulu

1. The ship share the route with the WNS (Which you can find in your STM ECDIS).
2. WNS receives your route, Icebreakers and VTS's will monitor the ships proceeding along the route. When ice conditions require WNS will send recommended ice route to the ship.
3. If WNS seems that it's necessary to send a recommended route to the ship they can edit the route received from the ship and send back the edited route to you or WNS can send only a short ice route to the ship, and then the ship has to insert the Ice route into it's own route.
4. Depending on what ECDIS system you ship has, you will in different ways be able to get the WNS to "Subscribe" on your monitored route, i.e. if you do changes in you route and chose it for monitoring again, WNS will be informed about you updates. In some of the ECDISes (Transas) the ship can subscribe on the WNS.

Below it is shown in detail how to do it in a Furuno ECDIS with STM capability.

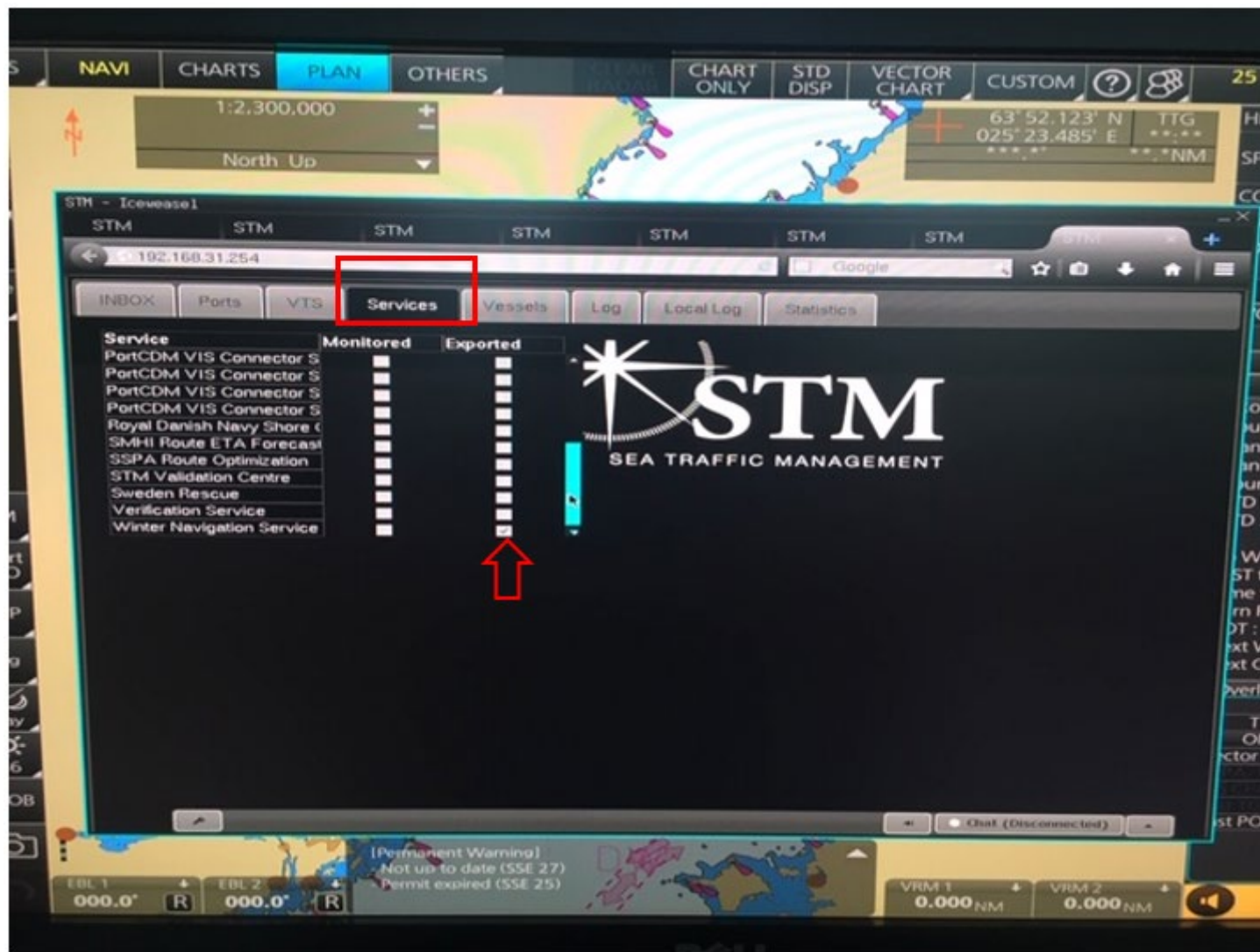
- Start with creating a Voyage Plan preferably with a valid schedule.



To share voyage plan with Winter Navigation Service:

- Make sure you are in “Plan” mode- Click STM- STM PC

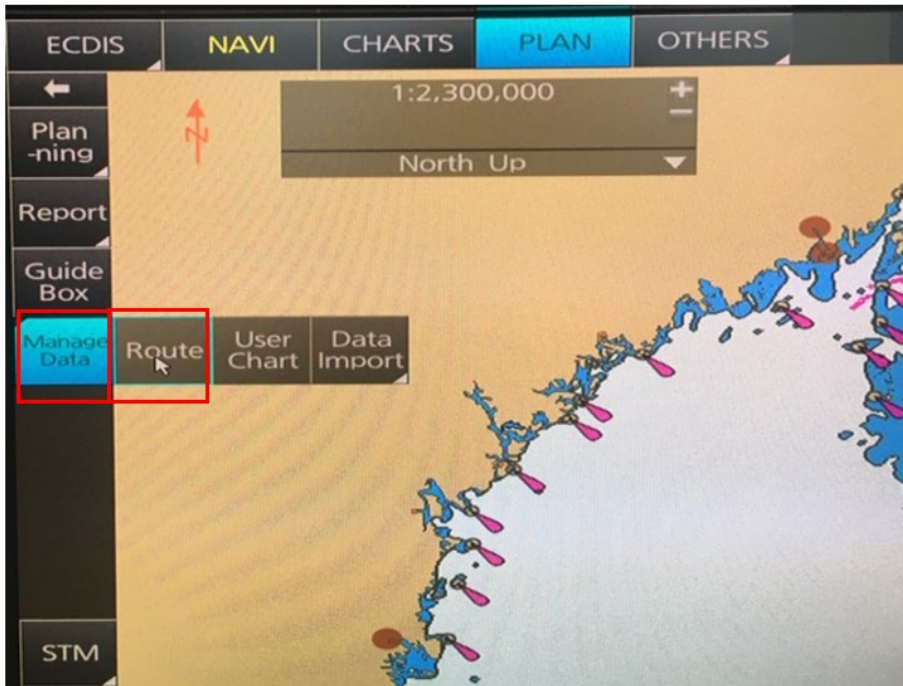




- Go to the tab "Services"
- Tick the box "Exported" on the Winter Navigation SC line, you may have to scroll down to find it.

Now you have given access to the service. The next step is to choose the route you want to send.

- Click Plan (you may have to move the STM window out of the way)- Manage data



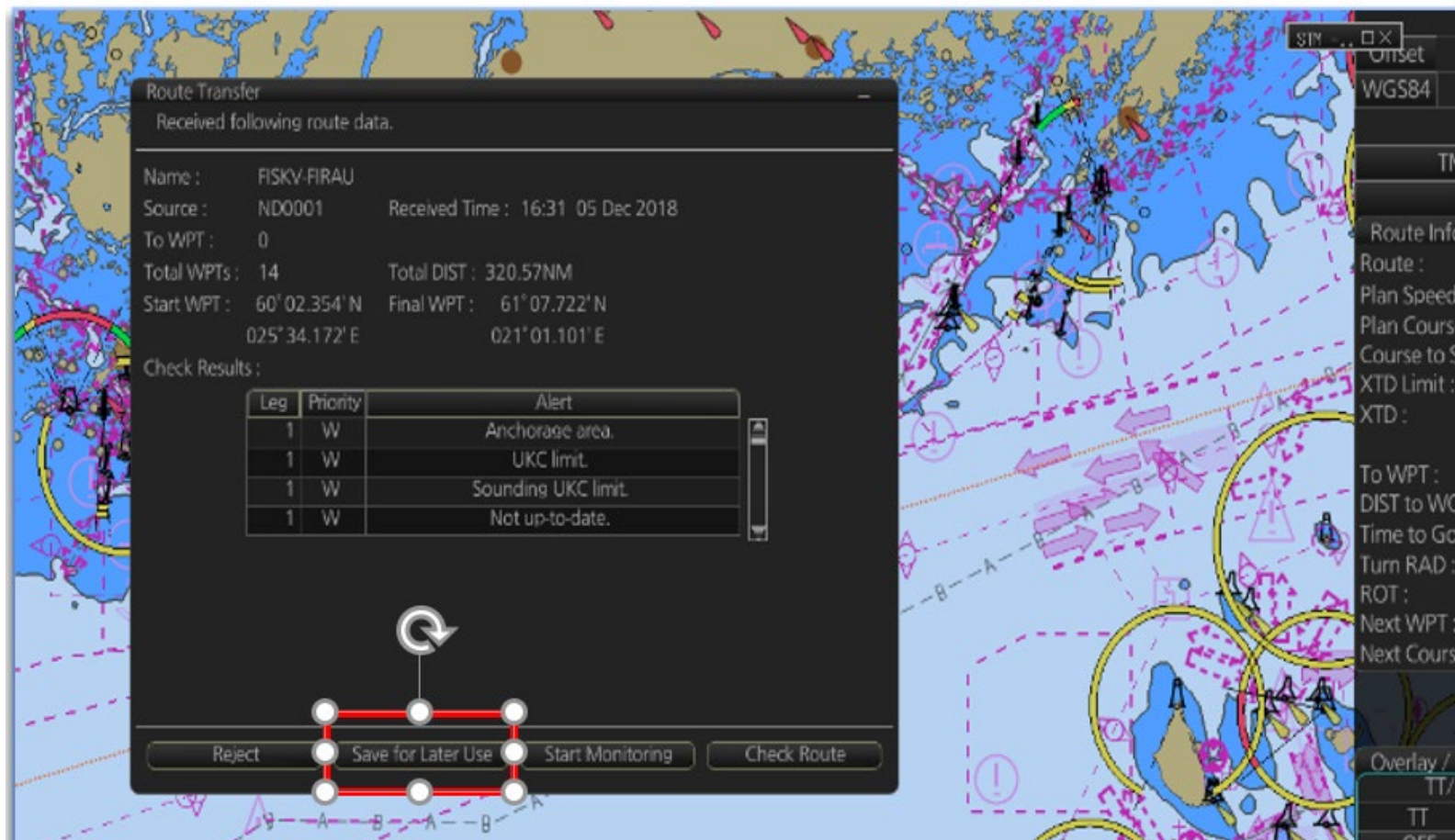
- Tick the route you like to send

- Click Export

You have now done your bit and have to wait for the route to be sent and then to receive the ice route (if WNS decides to send a Ice Route to you).

To use the ice route.

- The ice route will be received.



- Click save for later use
- The ice route is now available in your route library.