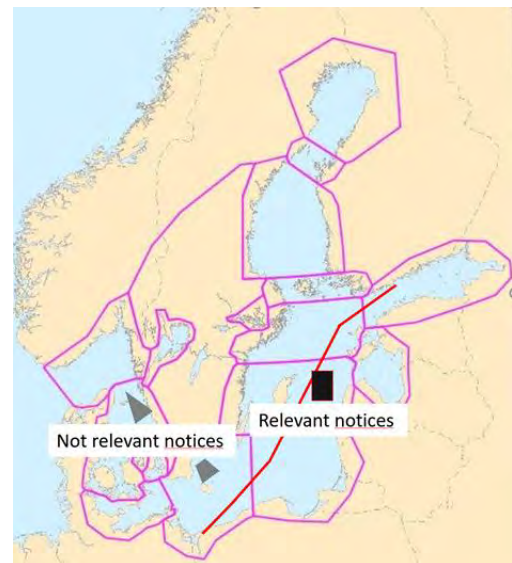


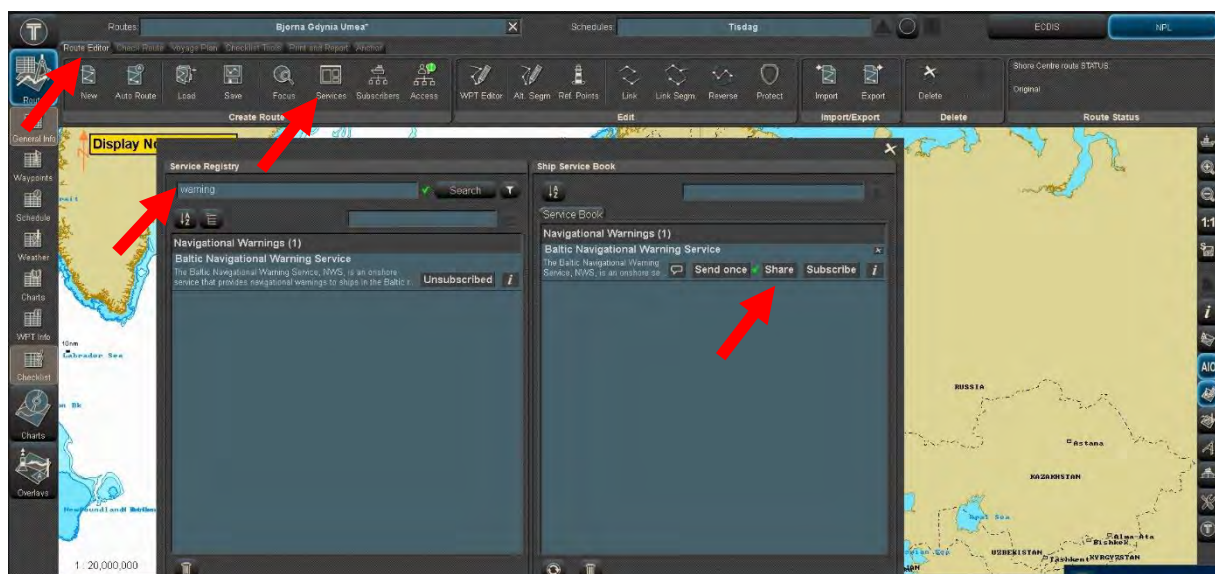
Short description of the Baltic Navigational Warning service:

- When the ship shares a voyage plan (route and schedule) with the service all active warnings within 15 nautical miles on each side of the route is returned to ship, see figure . This is the same information that is currently broadcasted as NAVTEX and VHF calls.
- During the voyage the ship also receives new warnings until the voyage is completed/leaves the area
- When warnings expire they will automatically be deleted
- For full service information see <http://stmvalidation.eu/developers-forum/service-catalogue/>

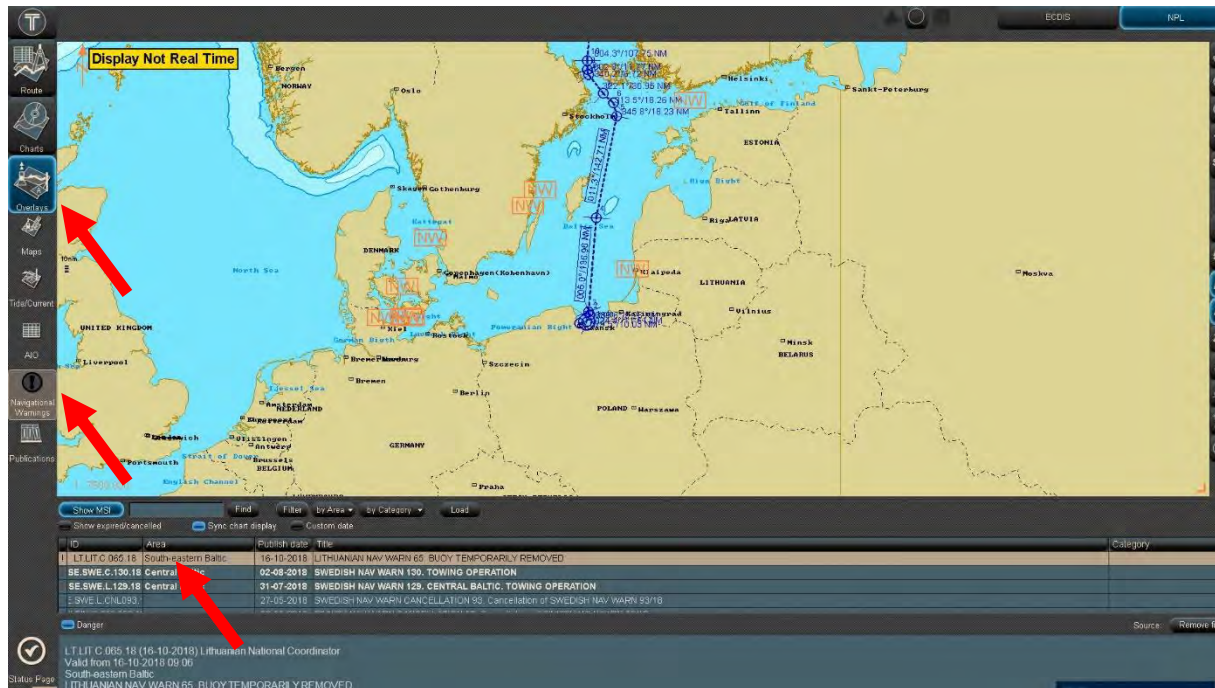


Transas user manual for Baltic Navigational Warning service automatic subscription on monitored route

1. Create your route according to normal procedures and attach a schedule with at least ETD on first WP and ETA on final WP. Note that a schedule must be created to receive notices.
2. Open "Route editor" tab and click "services" in NaviPlanner
3. Search for "warnings"
4. Add "Baltic Navigational Warning Service" to ship service book by click "add to book" button
5. Choose to share your monitored route with the navigational warnings service with the "share" button and pick monitored route from the drop down list. After this all routes loaded for monitoring will automatically be sent to the Baltic Navigational Warning service. Note that individual notices will be sent only once e.g. if ships' next voyage is also affected by the same notice it will not be re-sent. Consequently, it is recommended that OOW does not delete received notices in case they could be relevant for the next voyage.
6. The service can also be used during route planning stage with "send once" button.



In NaviPlanner under “chart overlays/navigational warnings” notices are readable in table and also showed on map



During voyage NaviSailor/ECDIS shows new received navigational warnings message(s) with the “NW message” button and they can also be shown under “Overlays” “Navigational Warnings” tab

HDG
MAN

STW
MAN

COG
NONE

SOG
NONE

ECDIS

NPL

Larger ENC

NW message

Navigation warning
SE SWE L 129.18 (31-07-2018) Swedish National Coordinator
Valid from 31-07-2018 17:31
Central Baltic
SWEDISH NAV WARN 129. CENTRAL BALTIC. TOWING OPERATION
CENTRAL BALTIC TO KALMARSSUND

1:20,000

MSI

Find

Filter

by Area

by Category

Load

Show expired/cancelled

Sync chart display

Custom date

ID	Area	Publish date	Title	Category
LT.LIT.C.065.18	South-eastern Baltic	16-10-2018	LITHUANIAN NAV WARN 65. BUOY TEMPORARILY REMOVED	
SE.SWE.C.130.18	Central Baltic	02-08-2018	SWEDISH NAV WARN 130. TOWING OPERATION	
SE.SWE.L.129.18	Central Baltic	31-07-2018	SWEDISH NAV WARN 129. CENTRAL BALTIC. TOWING OPERATION	
SE.SWE.L.CNL093.1		27-05-2018	SWEDISH NAV WARN CANCELLATION 93. Cancellation of SWEDISH NAV WARN 93/18	
FIN.FIN.CNL052.18		26-05-2018	FINNISH NAV WARN CANCELLATION 52. Cancellation of FINNISH NAV WARN 52/18	
EST.EST.CNL046.11		26-06-2018	ESTONIAN NAV WARN CANCELLATION 46. Cancellation of ESTONIAN NAV WARN 46/18	

Danger

SE SWE L 129.18 (31-07-2018) Swedish National Coordinator
Valid from 31-07-2018 17:31
Central Baltic
SWEDISH NAV WARN 129. CENTRAL BALTIC. TOWING OPERATION
1. CENTRAL BALTIC TO KALMARSSUND

TeamViewer

Source

Remove file

Main

Dual

AIS

Charts

Log Book

Maps

Monitoring

Overlays

Route Planning

Sensors

Target

Position Draggable

AIS

AIS filter

VECT. T GND

6 min

* (ECD) MASTER *

NW message

31 - 10 - 18

07 : 59 : 31

Prim

DR

Sec: NONE

se5el7iv

ON

Last upd.

12-18-2017

Updated to:

WK09-18

Targets

Acquisition

AIS

TgtID/AIS

DR for AIS tgts

> 5.0

kn

AIS target filter

Sleeping targets

RNG

CPA

TCPA

6.00

NM

4.00

NM

24.0

min

Display by type

Class A

Base station

Class B

SAR aircraft

AtoN

SART

Virtual AtoN

Association

AIS

STD DISP

Event

EBL / VRM 1

EBL / VRM 1

EBL 1

000.0

T

OFFSET

VRM 1

0.25

NM

Fixed

Depth in Metres

WGS-84